



39, Hill Street,
, W1J

£650 Per Week,

NAPIER WATT

T: 0207 935 0011
E: enquiries@napierwatt.co.uk
W: napierwatt.co.uk

35 Berkeley Square, Mayfair, London, W1J 5BF





Description

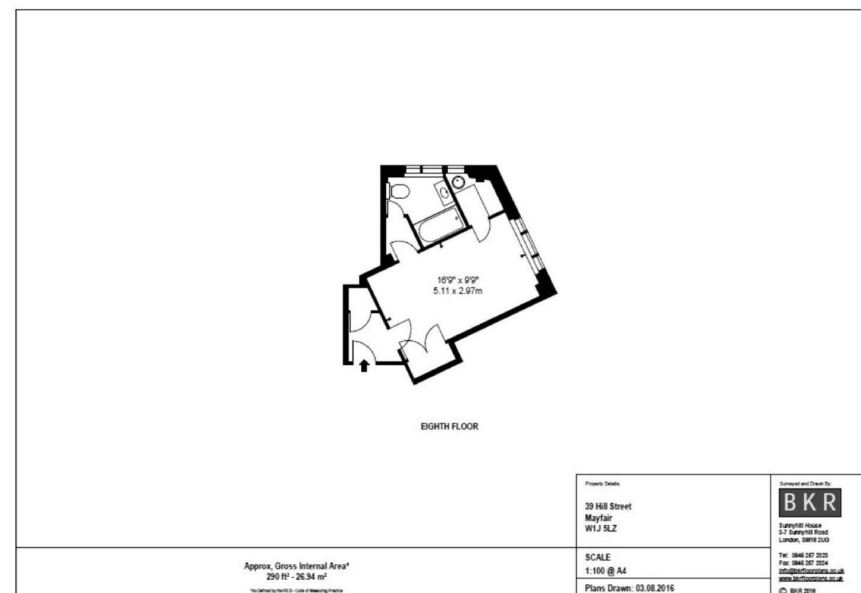
A well-proportioned studio apartment on the 8th floor of this beautiful red brick building, situated in the heart of London's fashionable Mayfair, neighbouring the famous Berkeley Square. The apartment is set over 291sq ft. and comprises, large living room area, modern bathroom and a unique kitchenette. Hill Street, benefits from spacious living accommodation, lift service, on-site building manager, and is nestled conveniently between two of London's parks Hyde Park and Green Park. Photos for indicative purposes only.

Key Features

- ACCESS TO A PRIVATE GATED COMMUNAL GARDEN
- AVAILABLE FURNISHED OR UNFURNISHED
- CENTRAL MAYFAIR LOCATION
- FLEXIBLE RENTAL TERMS
- PET FRIENDLY
- SUPERFAST BROADBAND
- 24-HOUR EMERGENCY HELPLINE SERVICE

Terms

Fees & Charges: Tenancies exceeding £100,000 Per annum £480 inc VAT, Tenancies where a company is a tenant £480 Inc VAT.



IMPORTANT: We would inform prospective purchasers that these sales particulars have been prepared as a general guide only. A detailed survey has not been carried out, nor the services, appliances and fittings tested. Room sizes should not be relied upon for furnishing purposes and are approximate. If floor plans are included, they are for guidance only and illustration purposes only and may not be to scale. If there are any important matters likely to affect your decision to buy, please contact us before viewing the property.